



Annual HazMat Permit # 24HM0398671

Valid From: **08/30/2024** To: **08/29/2025**

Issued to:

OAKLEY TRUCKING INC
3700 LINCOLN AVENUE
NORTH LITTLE ROCK, AR 72114

Permit Fee: **\$404.00** (Credit Card)
Sent By: **Web Download**
Ordered By: **Dustin Barnett**

USDOT #: **3259**

Weight: **Vehicle Combination 10,001 lbs. or more**

Fed. HM Registration #: **052324550100G**

Carrier Type: **For Hire**

Number of Vehicles Transporting Hazardous Materials in CO: **301+**

Commodity Being Transported: **Class 4.3, Class 5.1, Class 8, Class 9**

Proof of Financial Responsibility: **Form MCS-90**

Financial Responsibility Verification:

Pursuant to 42-20-202, C.R.S., as amended, applicant swears under penalty of perjury that applicant has the minimum liability insurance required by the U.S. Department of Transportation pursuant to 49 C.F.R., Part 387

In compliance with the provisions section 42-20-202(b), C.R.S., the department does grant authority to transport hazardous materials subject to the limitations and provisions mentioned below.

1. This permit must be carried in the transporting motor vehicle.
2. The above named carrier has paid the required amount and is authorized to make copies for the number of vehicles listed herein on the permit.

Full compliance with the laws of the State of Colorado and with the Rules and Regulations of the Department of Public Safety is required under this permit.

THE UNDERSIGNED HAS READ THIS DOCUMENT AND HAS PERSONAL KNOWLEDGE THAT THE FACTS IN IT ARE TRUE, AND AGREES TO COMPLY WITH THE RULES AND REGULATIONS PROMULGATED PURSUANT TO SECTION 42-20-108, C.R.S., AS AMENDED.

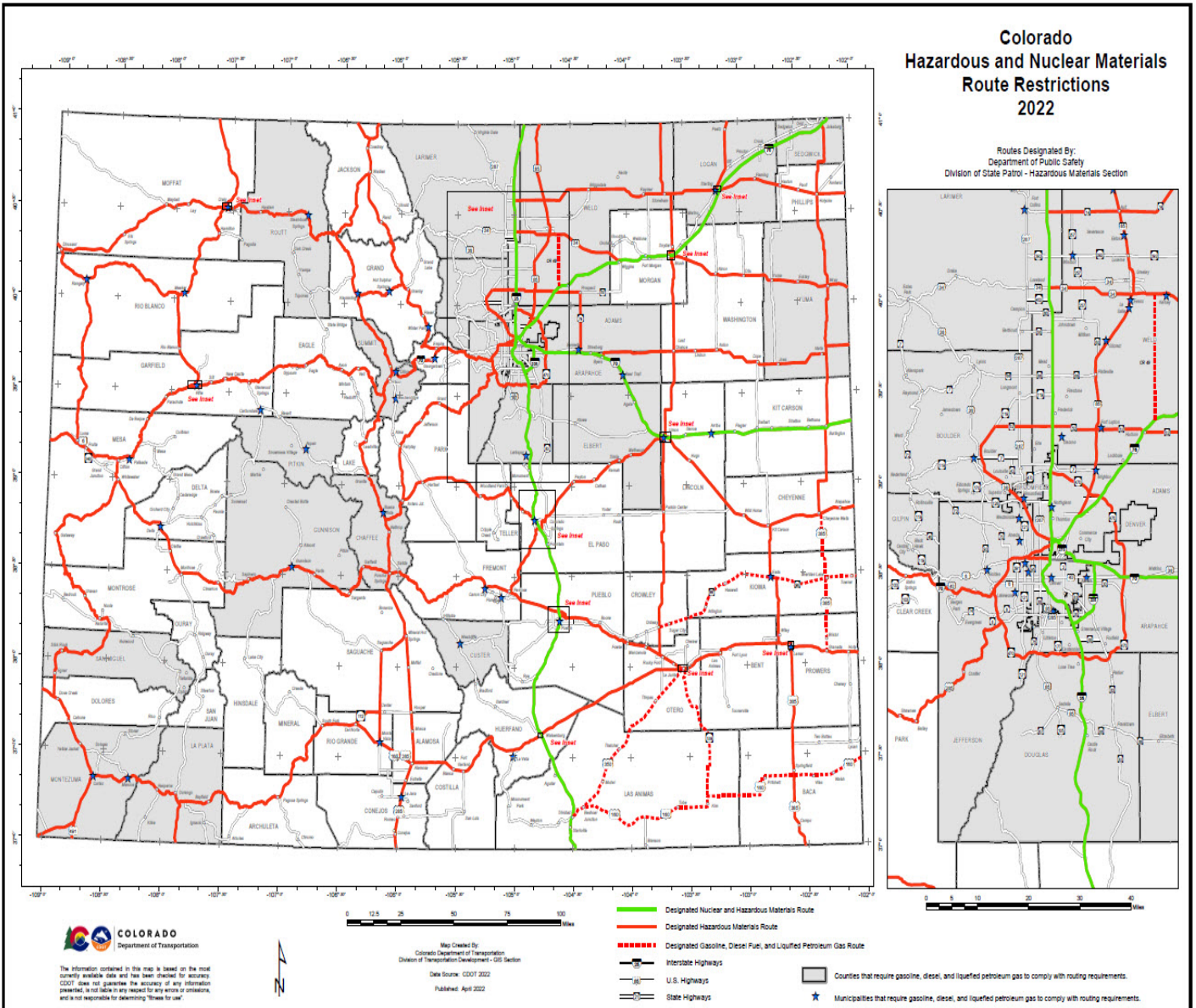
Driver Signature: _____

Date: _____

For current commercial vehicle restrictions and maps please visit our Freight and Trucking webpage at <https://sites.google.com/state.co.us/cotriporgfreight>.

Colorado Hazardous and Nuclear Materials Route Restrictions 2022

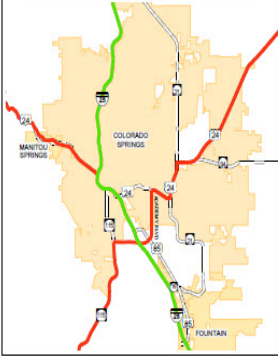
Routes Designated By:
Department of Public Safety
Division of State Patrol - Hazardous Materials Section



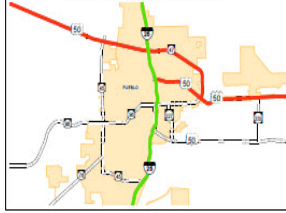
The information contained in this map is based on the most currently available data and has been checked for accuracy. CDOT does not guarantee the accuracy of any information presented, is not liable in any respect for any errors or omissions, and is not responsible for determining those for sale.

Map Created By:
Colorado Department of Transportation
Division of Transportation Development - GIS Section
Data Source: CDOT 2022
Published: April 2022

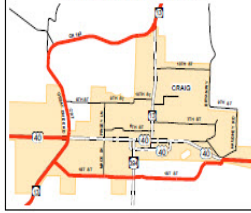
Colorado Springs / El Paso County



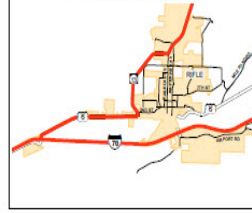
Pueblo / Pueblo County



Craig / Moffat County



Rifle / Garfield County



Sterling / Logan County



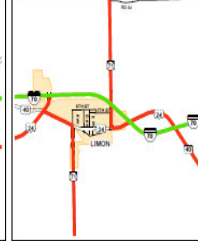
La Junta / Otero County



Brush / Morgan County



Limon / Lincoln County



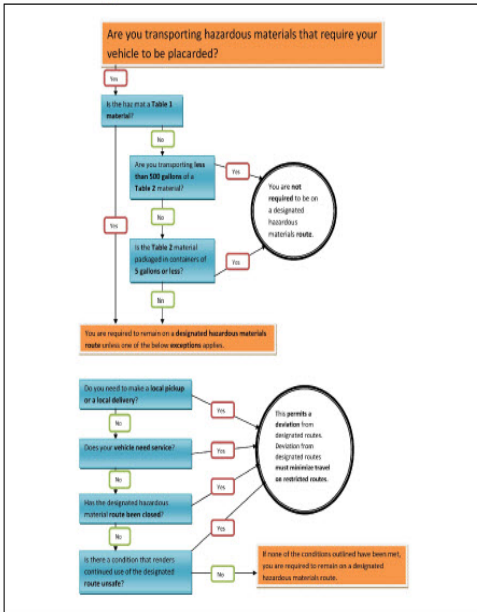
Lamar / Prowers County



Walsenburg / Huerfano County



Routing Decision Chart



**Colorado State Patrol
Communications Centers**
24 Hours Emergency Phone Numbers

Alamosa	(719) 589-6807
Craig	(970) 524-6501
Denver	(303) 239-4501
Montrose	(970) 249-4392
Pueblo	(719) 544-2424

**Colorado State Patrol
Hazardous Materials Unit**

(303) 273-1900

<https://www.colorado.gov/csp/hazardous-materials>

Nuclear Materials Routing Exceptions

Nuclear Materials are defined as a highway route controlled quantity of radioactive materials, in 42-20-402, CRS. When transporting a Nuclear Material, carriers are required to remain on designated nuclear material routes.

Carriers are not to deviate from designated nuclear materials routes except under certain circumstances:

- Carriers may deviate from designated routes in order to make local pick-ups or deliveries.
- Carriers may deviate from designated routes when continued use of the route is unsafe.
- Carriers may deviate from designated routes in order to refuel.
- Carriers may deviate from designated routes when the route is closed due to road conditions, road construction or maintenance operations.

When an emergency condition exists or when the designated nuclear materials route closed due to adverse weather conditions, or other circumstances, the Colorado State Patrol (CSP) may designate an alternative route. The CSP requires nuclear materials be escorted while off the designated route. Carriers must contact the nearest CSP Communications Center for instructions prior to deviating from a designated route.

There are exceptions to the definition of nuclear materials. These exceptions remove the materials described from the routing requirements discussed earlier. Nuclear Materials, as defined in 42-20-402, CRS, do not include:

- Nuclear materials used for research or medical purposes within Colorado. A Highway Route Control Quantity (HRCQ) of radioactive material used to irradiate medical supplies and equipment is not considered as being "used for medical purposes" and is therefore required to abide by the nuclear material routing rules.
- Radioactive materials transported as ores or products from mining, milling, smelting, or similar processing of ores, and mineral-bearing materials.
- Radioactive materials utilized in national security activities under the direct control of the Department of Defense; radioactive materials under the direct control of the Department of Energy used in carrying out atomic energy defense activities as defined in the federal "Nuclear Waste Policy Act of 1982," 42 USC 10101 et seq.

Finally, carriers transporting nuclear materials shall be familiar with the rules and regulations adopted by the Colorado State Patrol and published under 8 CCR 1507-25. Additionally, the carrier is required to comply with the provisions of 49 CFR 397.101(c).

Hazardous Materials Routing

As a general rule, vehicles carrying an amount of hazardous materials that require placards, must remain on designated hazardous materials routes. There are some exceptions to this rule:

- You may leave an authorized route in order to service a vehicle.
- You may leave an authorized route for local pickup or delivery of hazardous materials.
- You may leave an authorized route due to emergencies that would make continued use of the route unsafe.
- You may leave an authorized route when it is closed pursuant to 42-20-304, CRS.

A person transporting hazardous materials may make successive local pickups and deliveries without returning to the route between deliveries, when returning to the route is unreasonable.

Agricultural products other than Class 2 materials as defined in 49 CFR, over local roads between fields of the same farm, are excepted from the statutory requirements when transported by a farmer who is an intrastate private motor carrier and the movement of the agricultural product is in compliance with 49 CFR 173.5 and 42-20-108.5, CRS.

Some motor vehicles that are carrying hazardous materials, even amounts that may require placards, are not subject to the routing requirements. Vehicles carrying materials described in Table 2 of 49 CFR 172.504 in the following configurations:

- Quantities of less than 500 gallons of Table 2 hazardous materials.
- Table 2 hazardous materials in containers of five gallons or less.
- Table 2 hazardous materials when they are packaged as consumer commodities as defined in 49 CFR.

Additionally, motor vehicles that are transporting ores, the products from mining, milling, smelting, other similar processing of ores, and the wastes and tailings from those processes or special fireworks as defined in 49 CFR 173.58, when the aggregate amount of flash powder does not exceed fifty pounds, are excepted from the requirements of routing.